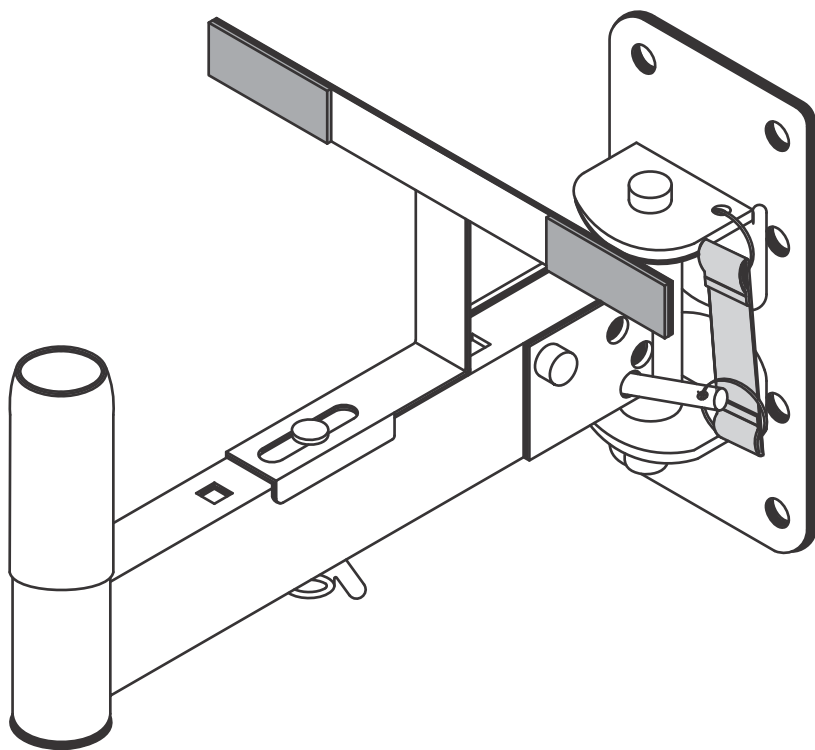


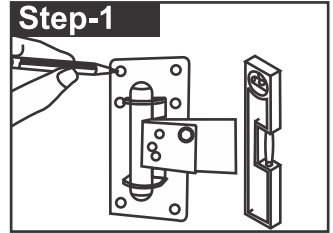
AWB-30

WALL MOUNT BRACKET

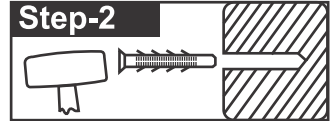


FIXING PROCEDURE

Step-1: Place the bracket on the surface that the bracket is being mounted. Adjust the bracket horizontally & vertically with the help of a level tube. Mark the four holes with the help of a pencil.

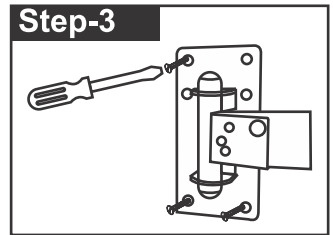


Step-2: Drill & blow out the holes on the surface & insert anchors in the hole.



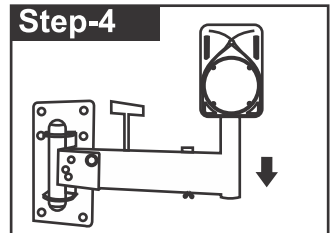
Step-3: Mount the bracket on the wall using high quality screws.

Note: Please use high quality & thick gauge screws to mount the bracket. The screw size will depend on factors like the type surface, the thickness of the walls, and weight of the speaker being mounted. For proper mounting procedures please seek advice from a qualified installer and architect.

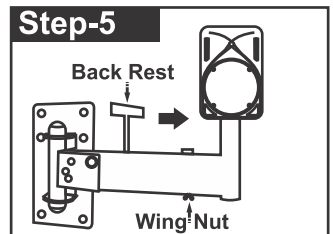


Step-4: Place the speaker on the pole. You can use the supplied pole mount holes larger than 35 mm.

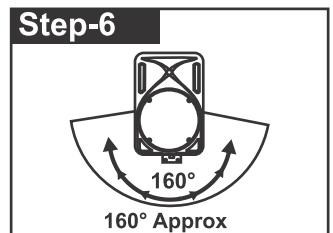
Note: Standard Mounting Hole dia is 35 mm.



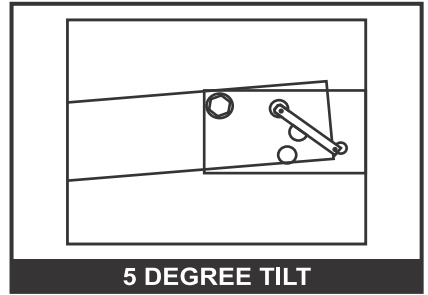
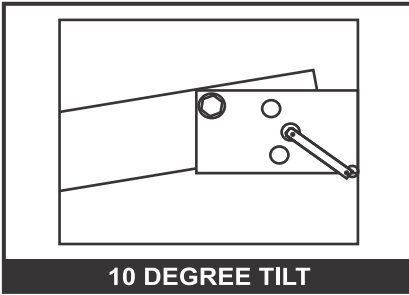
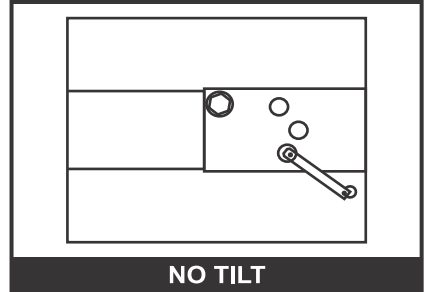
Step-5: Slide the back rest as per the size of the speaker & secure it tightly with the wing nut.



Step-6: You can adjust the speaker horizontally up to 160° (approx.).



You can tilt the speaker vertically using the 2 tilt angles up to 10° (approx). Once you have selected the tilt angle as per your requirement, insert the safety pin.



Safety Instructions:

- Make sure the safety pin is inserted & all the locks are secured tightly when the speakers are loaded.
- Make sure the speaker bracket is mounted on a stable & sturdy surface/wall.
- Manufacturer is not liable for any accidental damage caused due to mounting on surfaces which are not strong enough to support the weight of the speakers.
- Do not load speakers more than the loading capacity i.e. 40kg.
- Manufacturer is not liable for any accident caused due to negligence of the safety instructions or improper usage.

