

- ◆ Thank you for purchasing the AHUJA Wireless Conference System.
- ◆ Please read this manual thoroughly before making connections and turning on the power. Following the instructions in this manual will enable you to obtain optimum performance from your new AHUJA Wireless Conference System.
- ◆ Please retain this manual for future reference.

• Safety Instructions

Read the Instructions: Please read all the instructions in this section carefully before installation or use of the product. All the safety instructions must be followed.

Retain the Instructions: Please retain this Instruction Manual for future reference.



This symbol, wherever it appears, alerts you to the presence of uninsulated hazardous voltage that may be sufficient to constitute a risk of electric shock. External wiring to any terminal marked with this symbol must be done by a trained and instructed person only.



This symbol, wherever it appears adjacent to a component, alerts you that the concerned component can only be replaced by another of the exact same specifications.

WARNING

- To reduce the risk of electric shock, do not remove the top cover. No user serviceable parts inside. Refer all servicing to qualified personnel only.
- Before replacing any fuse, make sure the set is switched off and disconnected from the AC mains or any other power source. Replace a fuse only with another of exactly same specification.

CAUTIONS

Water & Moisture: To reduce the risk of fire or electrical shock, do not expose these sets to rain or moisture. Do not use these sets near water or in a wet location. Do not keep any object filled with liquid, such as a vase, on top of these sets. Do not insert or remove the AC adapter mains plug with wet hands.

The CWS-8300R is supplied with an AC adapter useable on 220-240V 50/60Hz Ac mains. Do not touch the AC adapter with wet hands.

Operation on Generator: When operating on a generator, make sure the AC adapter is disconnected till the generator voltage has stabilized.

Cleaning: Disconnect this equipment from the AC mains and external battery before cleaning. Clean with a damp cloth, but do not allow any liquid to enter the set. Do not clean with liquids or aerosols.

Battery: Do not disassemble, wrongly connect, short circuit or dispose of the battery in a fire. Battery may explode or leak, causing injury

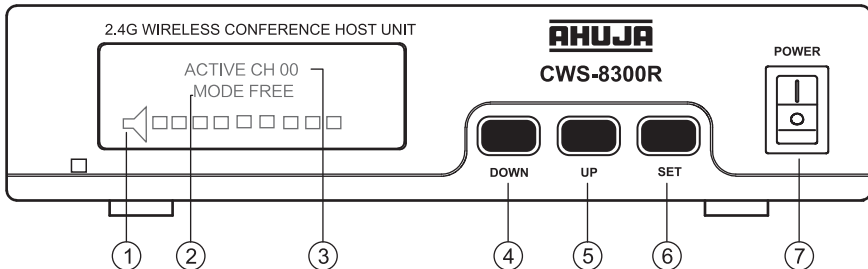
- The conference system consists of host unit, chairman unit and delegate units. Upto 254 delegate units can be used in one system.
- 4G ADFHSS technology features high confidentiality and strong anti-interference ability, long operating range up to 50m.
- Enables 4 microphones to speak simultaneously without mutual interference.
- Optional free or request speech mode of delegate units controlled by the chairman unit.
- Intelligent power management system features battery power saving (All units turn off automatically when the host unit is turned off).
- Built-in high performance frequency shifter tries to reduce howling and enhances the sound pick up effect.
- All units have LCD display indicating the working status and battery level.
- Audio output of host unit should be connected to an external amplifier and external speakers.
- Host unit features both balanced and unbalanced audio outputs for convenient connection to audio amplifiers.
- Host unit is supplied with an AC adapter which can be connected to 220-240V, 50/60Hz AC mains. It gives as 12V DC output.
- Chairman unit and Delegate unit work on 2 nos of AA cells. Use only any of the following cells:
 - The cell originally supplied with the unit (not rechargeable);
 - "Duracell" alkaline battery 1.5V LR6 (not rechargeable);
 - "Energiser" NiMH 1.2V HR6 (rechargeable);
 - "SONY" NH-AAHR-6 Mignon (rechargeable);

CAUTION

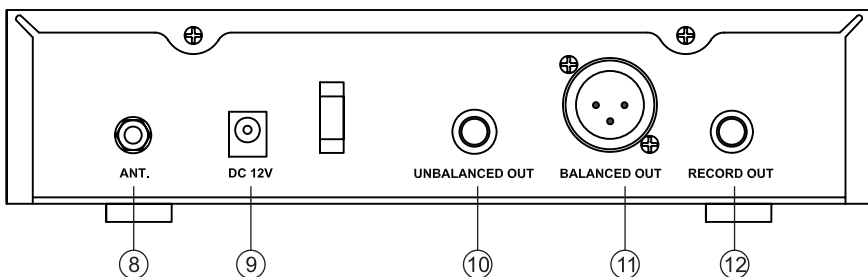
- Do not try to disassemble the battery.
- Do not wrongly connect or short circuit the battery.
- Do not dispose off the battery in a fire.

• Controls & Features

Front View (Host Unit)

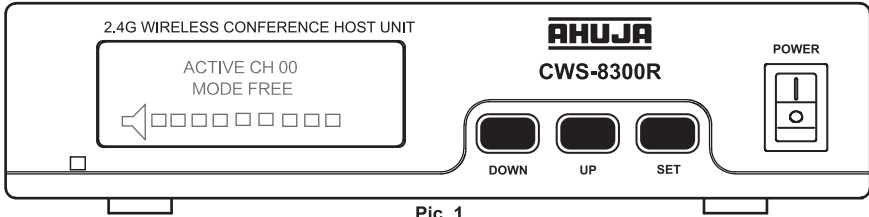


Rear View (Host Unit)



1. **Volume Indicator**
2. **Mode Display (Free/Request)**
3. **Number of Channel**
(Delegate Units) Synced
4. **Down button**
(for channel selection)
5. **UP button** (for Channel Selection)
6. **Set button** (to Store Selection)
7. **Power Switch:** Press top part of the knob, to switch ON the set. Press lower part of the knob to switch OFF.
8. **Antenna Socket**
9. **DC 12V Power Socket:** Connect DC cord of the AC adapter here.
10. **Unbalanced Output**
11. **Balanced Output**
12. **Recording Output**

Operating & Setup Instruction of CWS-8300R (Host Unit)



Pic. 1

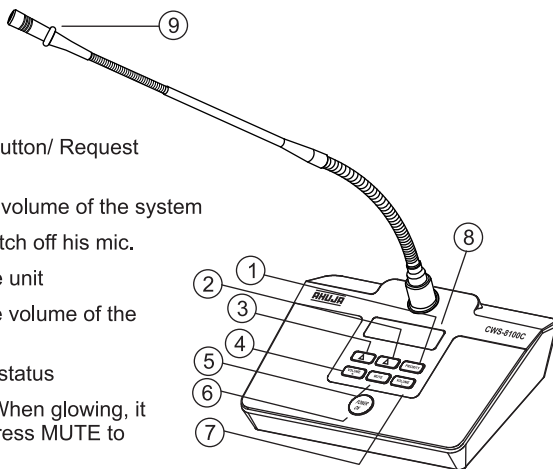
As shown in Pic 1, "Down/Up" button is for channel selection, "SET" Button is to enter(store), Chairman Unit is CH001, Delegate units are (CH002-CH255).

- Use the supplied DC 12V power adapter for the host unit power supply.
 - LCD display, shows the number of channels connected and operation mode; mode will be selected from the chairman unit.
1. First turn ON the CWS-8300R (Host Unit), When the display is ON user is allowed to synchronize the chairman and delegate units one by one. Chairman unit should always be the first unit to sync on CH001 (channel 1).
 2. Setup the chairman unit CWS-8100C : First press the "SET" button of the host unit, when the screen displays "SETUP CH NO.001" turn ON the chairman unit, unit will get connected with the host unit automatically within few seconds on CH001. When the chairman unit screen displays the working status, it means the chairman unit has joined the system successfully.
 3. Set up the delegate units CWS-8200D one by one : First turn off the chairman unit and the delegate units (if any) that have joined with the system earlier, otherwise system will not go to next unit setup. To setup a delegate unit, switch ON the host unit press the "SET" button of the host unit, after the screen displays "SETUP CH. NO. XXX" adjust channel number through UP/DOWN button, turn on the delegate unit and the unit will get connected with the host unit automatically within a few seconds on "CH. No. XXX" selected for synchronization. When the screen on that delegate unit displays the current channel no, it means the delegate unit has joined the system successfully.

• Controls & Features

CWS-8100C - CHAIRMAN / MODERATOR UNIT :

1. **PRIORITY:** To mute all delegate units
2. **Middle Button:** Request Mode Selection Button/Request Refuse Button
3. **Left Button:** Free Mode Button/ Request Agree Button
4. **Volume+:** To increase the volume of the system
5. **Mute:** For chairman to switch off his mic.
6. **POWER ON:** To power the unit
7. **Volume-:** To decrease the volume of the system
8. **LCD:** Display the working status
9. **Mic indicator ring LED:** When glowing, it indicates the mic is ON. Press MUTE to switch the mic ON or OFF.



Operating & Setup Instruction of CWS-8100C (Chairman Unit)

1. Press the "Power On" button to turn ON the chairman unit & the host unit, the chairman unit will start synching and LCD will display "Connecting", also the mic ring LED will glow. LCD will display "00:00:00" and start the timing after the host unit and chairman unit are successfully connected, and the mic indicator will constantly light up. Conversely, the chairman unit will turn off automatically if the connection fails.
2. **Priority & Mute Operations of CWS-8100C:** Press the "MUTE" button, chairman unit's mic will get deactivated and LCD displays "MUTE ON". Re-press the "MUTE" button to switch ON the mic again.
3. **Mode Setting:**
 - Press the "left button 1" of chairman unit for free mode. "FREE" will display on LCD screen (as shown in Pic 2). Any delegate mic can be switched ON in this mode (Up to 4 mics).
 - Press the "middle button 2" of chairman unit for request mode. "REQUEST" will display on LCD screen (as shown in Pic 3). Under this mode, press the delegate unit's "TALK" button to send the request to chairman unit (chairman unit's LCD backlight glitters), delegate unit can speak after permitted by chairman unit. E.g. delegate unit sends the request to chairman unit, chairman unit LCD displays "YES/NO" (as shown in Pic 4), press left button 1 to agree, press button 2 to refuse.



pic 2



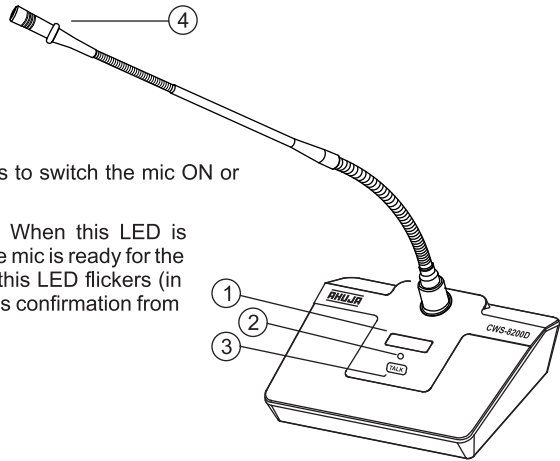
pic 3



pic 4

CWS-8200D - DELEGATE UNIT:

1. **LCD Screen:** Displays the current working status
2. **Talk Indicator:**
Constantly Lights: active to speak. Flickering: Unit not connected well with Host.
3. **Power/Talk Button:** Press to switch the mic ON or OFF.
4. **Mic indicator ring LED:** When this LED is constantly ON, it means the mic is ready for the delegate to speak. When this LED flickers (in REQUEST) mode, it means confirmation from the chairman is awaited.

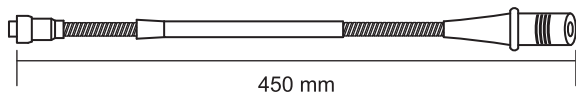


Operating & Setup Instruction of CWS-8200D (Delegate Unit)

1. Press the "TALK" button to turn ON the unit, LCD screen glitters.
2. Press "TALK" button of delegate unit, when indicator lights (mic ring LED) it means unit is ready to speak.
3. If chairman unit is set ON request mode, press the "TALK" button of delegate unit, the talk indicator (mic ring LED) will flicker to indicate that it is waiting for acceptance from chairman unit, the indicator keeps ON after request succeeds, conversely the indicator will turn OFF if request fails.
4. 4 unit can speak simultaneously and if 5th unit will be permitted to talk then 1st one turns OFF automatically.
5. Long press the "TALK" button for 3 second to turn OFF the delegate unit mic.

GN-45 - GOOSENECK MICROPHONE

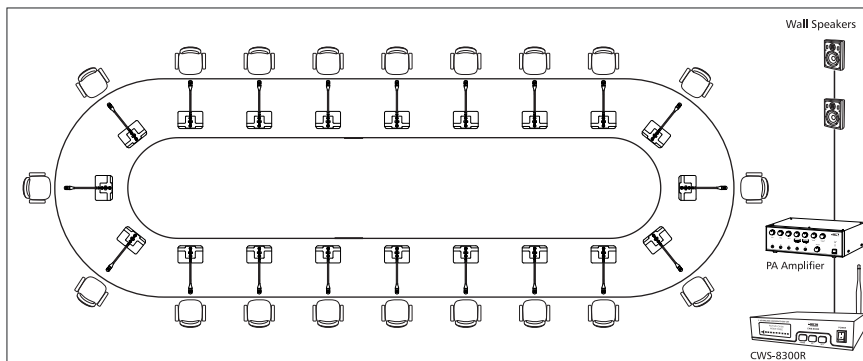
1. This Gooseneck Microphone of length 450mm (17¾") is supplied and sold separately.
2. To be used with CWS-8100C and CWS-8200D.
3. Connect the microphone to the unit as shown above. Ensure that the connector is fully tightened.



• Specifications

CARRIER FREQUENCY	: 2.4GHz (2400 - 2483MHz) Digital FHSS Technology
OPERATING RANGE	: 25-40m (Indoors)
FREQUENCY RESPONSE	: 70 - 15,000Hz
POWER SUPPLY	
Chairman & Delegate Unit	: DC: 12V / 1AAC adapter
DIMENSIONS	
Host Unit	: W210 × H55 × D185 mm
Chairman Unit	: W205 × H65 × D145 mm
Delegate Unit	: W170 × H60 × D120 mm
Gooseneck Length	: 450 mm
WEIGHT	
Host Unit	: 1.30kg
Chairman Unit	: 0.83kg
Delegate Unit	: 0.56kg
Gooseneck	: 0.13kg

BOARDROOMS



AHUJA RADIOS

215, Okhla Industrial Estate, New Delhi-110020, INDIA

C-45, Phase-II, Noida-201305 (UP) INDIA ● 3, Okhla Industrial Estate, New Delhi-110020 INDIA

Tel.: +91-11-26831549, 41612474 Fax: +91-11-26847287 E-mail: ahuja@ahujaradios.com

Website: www.ahujaradios.com

AHUJA®

- Design and Specifications are subject to change without notice owing to continuous product up-gradation
- Technical specifications are subject to production tolerances.
- We cannot be held responsible for printing errors, should they occur.
- **AHUJA** is a registered trademark of Ahuja Radios in India and other countries.
- © Copyright Ahuja Radios, 2016. All rights reserved. Any unauthorized reproduction or use of logos, images or design elements is strictly prohibited by law.
- No part of this compilation may be reproduced in any manner or translated without written permission.