

GSX-630T



- ◆ Thank you for purchasing AHUJA Garden Speaker GSX-630T
- ◆ Please read this manual thoroughly before making connections and turning on the power. Following the instructions in this manual will enable you to obtain optimum performance from your new AHUJA Garden Speaker.
- ◆ Please retain this manual for future reference.

• Safety Instructions

Read the Instructions: Please read all the instructions in this section carefully before installation or use of the product. All the safety instructions must be followed.

Retain the Instructions: Please retain this Instruction Manual for future reference.



This symbol, wherever it appears, alerts you to the presence of uninsulated hazardous voltage that may be sufficient to constitute a risk of electric shock. External wiring to any terminal marked with this symbol must be done by a trained and instructed person only.



This symbol, wherever it appears adjacent to a component, alerts you that the concerned component can only be replaced by another of the exact same specifications.

CAUTIONS

No user serviceable parts inside. Refer all servicing to qualified personnel only.

Contents	Page No.
■ Features	4
■ Connections	5
■ Installations	6
■ Dimensions	7
■ Specifications	7

• Features

Ahuja introduces a 2-way green garden speaker model GSX-630T which harmoniously blends into any landscape with garden environment. Rugged and stable construction for mounting on or in the ground. High fidelity sound for both speech and music. Tough weather resistant enclosure with water resistant PP cone speaker. Easy power tap selection through different colour wires accessible from outside. IP 66 rating is provided against foreign particles such as dust and jets of water, thus making them ideal for outdoor use. Suitable for gardens, hotels, farm houses, theme parks, lawns of religious places and historical monuments etc.

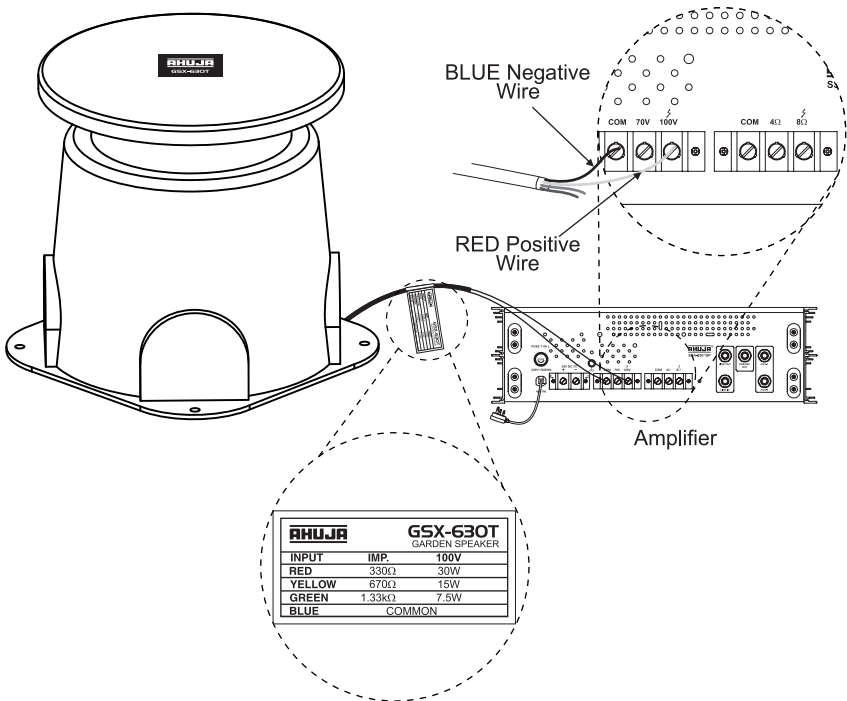
SYSTEM FEATURES

- High fidelity sound
- Weather-proof application with IP66 rating
- 2-way loudspeaker design
- 360° outdoor coverage
- Three power taps on 100V line, available through a multi-core cable
- Available in green color

It is equipped with an integrated four-core cable and a built-in 100V line transformer. Before making connections, select the desired power tap on 100V line, from the four-core multi colour cable. Connect the wire of 30W, 15W or 7.5W tap from the garden speaker to the 100V output terminal of the amplifier. Similarly, connect the common wire from the speaker to COM terminal of the amplifier.

Wiring Tips

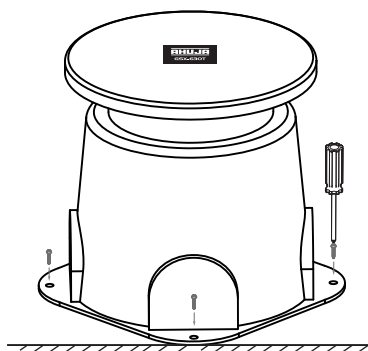
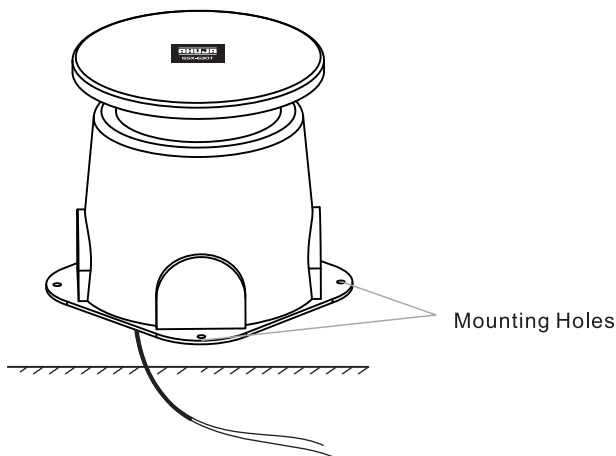
- The length of speaker lines should be kept to a minimum and multiple wire joints should be avoided.
- Use cables with conductors of adequate cross-section, considering total length of the cable and the total power of the speakers.
- Speaker cables should not be routed together with power conductors, microphone cables, or other lines. This helps in preventing buzzing & interference in the speaker system.
- Use cables with twisted conductors.



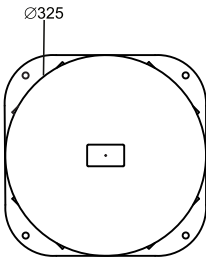
• Installation

The Ahuja GSX-630T is designed to be installed on wooden or concrete surfaces. Anchoring the speaker for stability and security can be accomplished using suitable screws, through the pre-drilled holes, located at the base of the speaker.

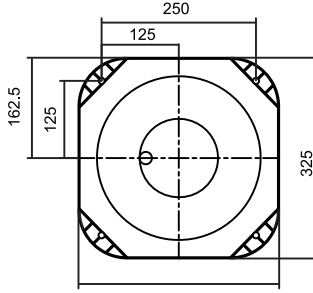
Run the connecting cable below the ground surface. Make connections of speaker cable with the connecting cable. Now fix the garden speaker through four pre-drilled holes, by using suitable screws.



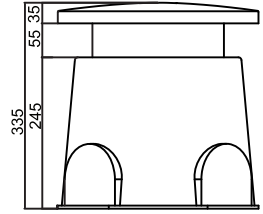
• Dimensions



Top View



Bottom View



Side View

• Specifications

Model	GSX-630T
Input Power	30W RMS/45W Max.
Power Taps on 100V	30/15/7.5W
Frequency Response	80-20,000Hz
SPL at 1kHz (1W/1m)	90dB
Coverage Angle (HxV)	360°
LF Speaker	152mm (6")
HF Tweeter	25.4mm (1")
Colour	Green
Dimensions	Ø325 x H335 mm
Weight	3.00kg Approx.

Design and Specifications are subject to change without notice owing to continuous product up-gradation. Technical specifications are subject to production tolerances. We cannot be held responsible for printing errors, should they occur. **AHUJA** is a registered trademark of Ahuja Radios in India and other countries. © Copyright Ahuja Radios, 2025. All rights reserved. Any unauthorized reproduction or use of logos, images or design elements is strictly prohibited by law. No part of this compilation may be reproduced in any manner or translated without written permission.

AHUJA RADIOS

E. & O. E. 1.5K/10/24

215, Okhla Industrial Estate, New Delhi-110020, INDIA • C-45, Phase-II, Noida-201305 (UP) INDIA

Tel.: +91-11-26831549, 41612474 Fax: +91-11-26847287

E-mail: ahuja@ahujaradios.com Website: www.ahujaradios.com