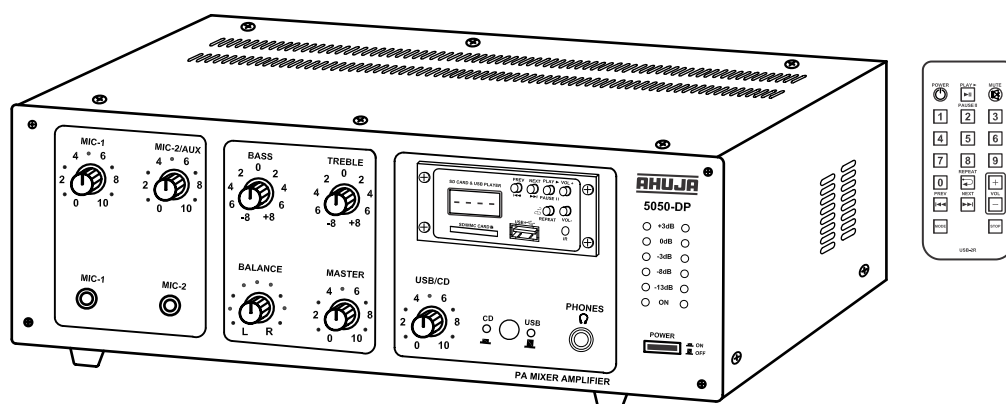


5050-DP



SPECIFICATIONS

Power Output (4 ohms load per channel)	: 50 + 50W RMS (max) : 40 +40W RMS : 35 + 35W RMS at 1% THD	Pre Amp Output (L&R)	: 200mV / 600Ω
Input Channels	: 2 × Mic 1.0mV (Lo-Z) / 4.7kΩ : 1 × Aux 100mV / 330kΩ : CD (L&R) 200mV/300kΩ	Cross Talk	: >40dB
Frequency Response	: 20Hz -20,000Hz ±3dB	MP3 Playback Facility	: MP3 (FAT 32 Format) Port: USB-A (Full speed)
S/N Ratio (L&R)	: >60dB	Power Supply*	: AC: 220-240V 50Hz/60Hz
Tone Control:	: Bass: ±10dB at 100Hz : Treble: ±10dB at 10kHz	Power Consumption	: AC: 150VA at rated output
Speaker Output (L&R)	: 4 to 16Ω (8Ω recommended)	Protections	: AC: Fuse 1Amp. 250V (T 1AL) : DC: Fuse 2×2.5Amp. (T 2.5AL)
		Indicators level	: Pilot LED, USB Display 5 LED Array for (L&R) output
		Dimensions	: W365 × H125 × D295 mm
		Weight	: 6.40 kg approx.

* This unit is connected to 240V tap when leaving the factory.

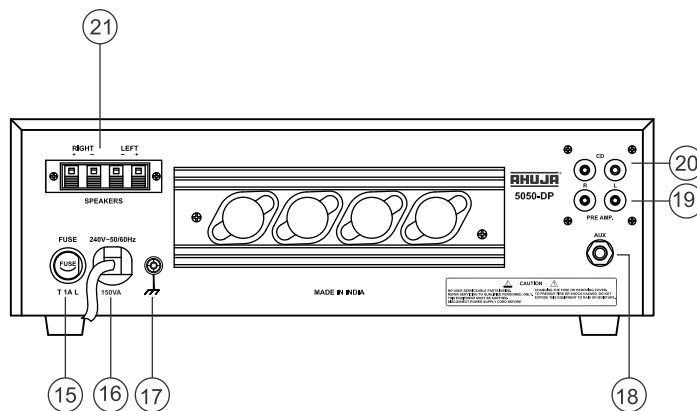
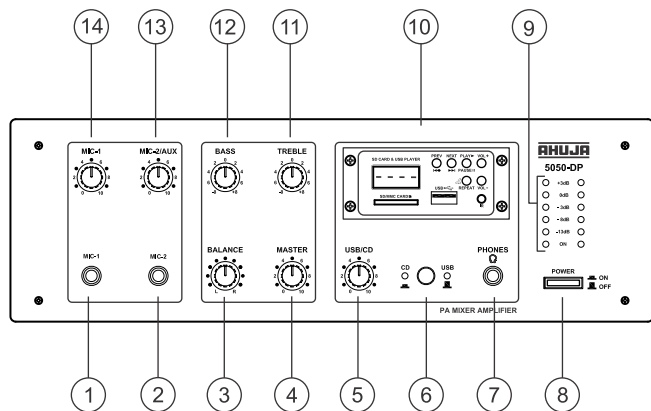
Owing to continuous product up-gradation, design & specifications are subject to change without notice.

Specifications claimed are subject to permissible production tolerances.

Please read this manual thoroughly before making connections and turning on the power. Following the instructions in this manual will enable you to obtain optimum performance from your new AHUJA PA Mixer Amplifier.

Please retain this manual for future reference.

• Front & Rear Panel Controls & Features



1. MIC-1 Input Jack Socket

For Connecting a low impedance microphone.

2. MIC-2 Input Jack Socket

For connecting a low impedance microphone.

3. Balance Control

This control permits level balancing of left and right channels. Turning this control toward left (anti clockwise) will increase relative level of left channel with respect to right channel & vice-versa.

4. Master Control

This is a stereo control used for overall adjustment of volumes of both channels (L&R) simultaneously.

5. USB/CD Volume Control

This is a stereo control for adjusting the levels of music played through MP3 digital player or CD input (L&R) at rear panel.

6. CD/USB Selector Switch

This is used for selecting signal from CD or USB source.

7. Headphone Jack

To connect any stereo headphone jack with impedance 8 ohm to 600 ohm for silent monitoring or listening to the music.

8. Power Switch

Push the switch to make amplifier ON. Push again to switch OFF the amplifier.

9. Level LED arrays & Power LED

Separate 5 LED array for left and right channels for indicating playback levels. First LEDs indicate ON/OFF status of the amplifier.

10. MP3 Playback Facility (for details see page 3).

11. Treble Control

For cutting or boosting of high frequencies signal.

12. Bass Control

For cutting or boosting of low frequencies signal.

13. MIC-2/AUX Control

For adjusting the level of MIC-2 and AUX signals.

14. MIC-1 Control

For adjusting the level of MIC-1 signal.

15. AC Mains Fuse Rating 1 Amp. 250V (T 1A L)

16. AC Mains Cable

17. Earth Terminal

18. AUX Input

For connecting the signal from source such as a tuner or audio output from a mixer.

19. PRE AMP. Output Jacks

For connecting to another recorder for recording or to a high power amplifier for playback to larger audience.

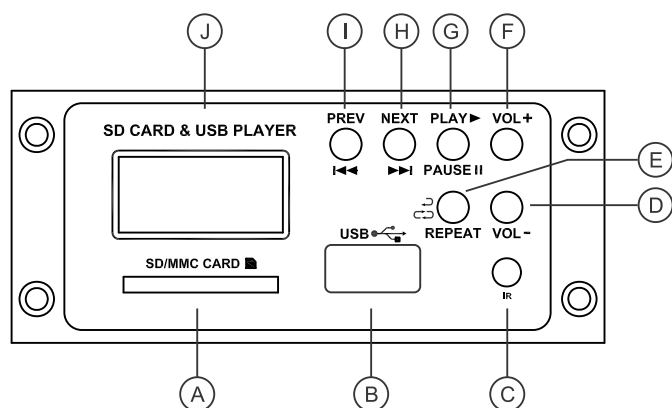
20. CD Input

For connecting the output from a CD player to this equipment.

21. Speaker Terminals

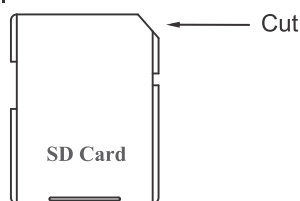
The speaker wires can be connected to this spring loaded push type terminal, by pressing the terminal partially while inserting the twisted wire inside the hole. Speaker of 8 ohms impedance are recommended for the best matching. Never use speakers of less than 4 ohms impedance. Use correct polarity of speakers to the respective terminals i.e. positive or negative, as marked.

• MP3 Playback Facility : Controls & Features

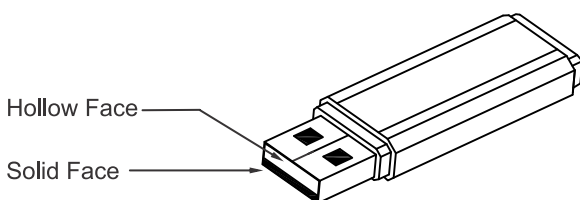


- A. SD/MMC Card Connector:** Insert the SD/MMC Card into its appropriate slot to play. When taking out the card, pull the card to take out.

While inserting SD/MMC card into the slot, ensure that the card is inserted in such a way that all pins are facing downward and cut is towards right as shown in figure.



- B. USB Connector:** Insert the USB drive here. While inserting USB drive into the USB connector, hold the USB drive in such a way that hollow part of the USB drive is upwards as shown in Figure.



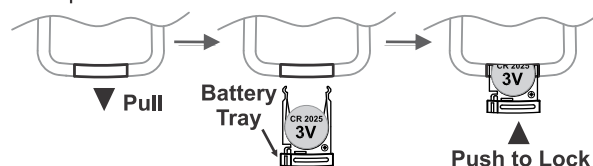
Any forceful insertion in wrong direction will damage the connector.

- C. IR Sensor:** Picks up signal from the Remote control. Point the Remote control toward this sensor when using the remote control.
- D. VOL-:** To decrease volume level of Mp3 player.
- E. REPEAT ↺:** Press once to repeat the song being played. Press again to repeat all the songs.
- F. VOL+:** To increase volume level of MP3 player.
- G. ►|| PLAY/PAUSE:** Press PLAY/PAUSE once to Pause if music is already playing. Press PLAY/PAUSE again to resume playing. Play will resume from the same point where it had stopped.

- H. ►►|| Next:** Press NEXT to select next forward music track. Pressing NEXT repeatedly will move the system to successively next forward tracks.
- I. ◀◀ Prev:** Press PREV to Select the previous track. Pressing PREV repeatedly will move the system to successively previous tracks.
- J. LCD Display:** Displays 3 digits of the track selected to play i.e 001 to 999. During play, displays the time duration of the track played.

Remote Control

- K. Power:** Press once to switch off MP3 digital player, press again to switch ON.
- L. Number key 0 to 9.** To choose the track number to be played.
- M. ◀◀:** To select the previous track.
- N. MODE :** To select SD or USB if both are inserted.
- O. ►►||:** Press to select the next track.
- P. ↺** Press once to repeat the song being played. Press again to repeat all the songs.
- Q. STOP:** Press to stop the track being played.
- R. Vol:** Press to decrease the volume of MP3 Player.
- S. Vol:** Press to increase the volume of MP3 Player.
- T. MUTE:** Press once to mute the sound, press again the resume the sound.
- U. ►|| PLAY/PAUSE:** Press Play/Pause once to Pause when music is already playing. Press Play/Pause again to resume playing.
- V. Battery Replacement:** Pull out the battery tray and replace the battery with positive electrode facing upwards as shown in fig. below. Push the battery compartment back to the close position. Use CR2025 or equivalent lithium coin cell.



Caution: Danger of explosion if battery is incorrectly replaced. Replace only with same or equivalent type

• Operating Procedure

1. Set all volume controls to '0' position and keep the power switch at OFF position. Connect the speakers and desired inputs i.e. MIC, AUX or CD.

Plug in the AC power supply cord to the nearest AC mains socket and put the power switch to ON position. The Power ON LEDs should glow.
2. If CD source is to be used connect external CD player to CD input and select CD/USB Switch to CD.
3. If USB to be used select the CD/USB Switch to USB
 - Insert pen drive into USB port, it starts playing automatically from the 1st track or from the last track played if the same pen drive is used earlier.
 - Setting of volume level remains in memory as long as power is not switched to OFF. If power is switched OFF, and ON again the MP3 module will automatically switch to ON position and volume goes back to default settings level.
4. Increase the respective volume control i.e, MIC-1, MIC-2/AUX or CD/USB to the desired level.
5. Bass and Treble setting can be done for desired tonal quality.
6. Adjust the balance control for optimum balancing between left & right output levels.
7. Overall level adjustment can be done by increasing master control to the desired level.

• Safety Instructions

Read the Instructions: Please read all the instructions in this section carefully before installation or use of the product. All the safety instructions must be followed & the Manual for future reference..



This symbol, wherever it appears, alerts you to the presence of uninsulated hazardous voltage that may be sufficient to constitute a risk of electric shock. External wiring to any terminal marked with this symbol must be done by a trained and instructed person only.

WARNING

- To reduce the risk of electric shock, do not remove the top cover. No user serviceable parts inside. Refer all servicing to qualified personnel only.
- Before replacing any fuse, make sure the set is switched off and disconnected from the AC mains or any other power source. Replace a fuse only with another of exactly same specification.

CAUTIONS

Water & Moisture: To reduce the risk of fire or electrical shock, do not expose this set to rain or moisture. Do not use this set near water or in a wet location. Do not keep any object filled with liquid, such as a vase, on top of this set. Do not insert or remove the AC mains plug with wet hands.

Power Source: This set is designed to work on 220-240V, 50/60Hz AC mains.

Power Cord Protection: Do not cut, kink, damage or modify the AC power cord supplied with this set. Keep the AC power cord away from heaters and harmful chemicals. Do not keep any heavy object on the power cord.

Ventilation: This set should be situated so that its location or position does not interfere with its proper ventilation. Do not cover the ventilation holes / slots. Do not insert or drop anything into the ventilation holes / slots.

Stability: This set must be kept in a stable and flat horizontal position, and never in a tilted position. Do not place this set on an unstable stand, tripod, bracket or mount. Do not use attachments which are not supplied or explicitly recommended by the manufacturer.

Earthing: This set must be earthed properly before use. A wire from the Earth terminal on the rear panel must be connected to electrical earth.

Cleaning: Disconnect this equipment from the AC mains and external battery before cleaning. Clean with a damp cloth, but do not allow any liquid to enter the set. Do not clean with liquids or aerosols.

Exposure to Heat: Do not touch the heatsinks while the set is working.

Design and Specifications are subject to change without notice owing to continuous product up-gradation. Technical specifications are subject to production tolerances.

We cannot be held responsible for printing errors, should they occur. **AHUJA** is a registered trademark of Ahuja Radios in India and other countries.

© Copyright Ahuja Radios, 2017. All rights reserved. Any unauthorized reproduction or use of logos, images or design elements is strictly prohibited by law.

No part of this compilation may be reproduced in any manner or translated without written permission.

TRUSOUND PVT. LTD. • C-89, Sector IV, Noida, Gautam Budh Nagar-201 301 (UP)

Regd. Office : 125E, Okhla Industrial Estate, New Delhi-110 020

Tel.: +91-120-4665665 Fax : +91-120-4665621

E-mail: trusoundsupport@airtelmail.in

E. & O. E. 0K/08/17